

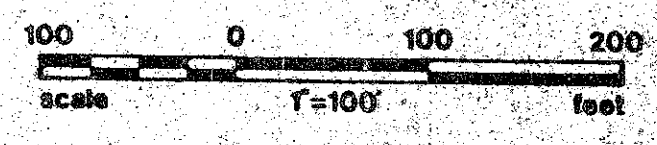
PLAT NO. 19 QUAIL RIDGE

(A PLANNED UNIT DEVELOPMENT)

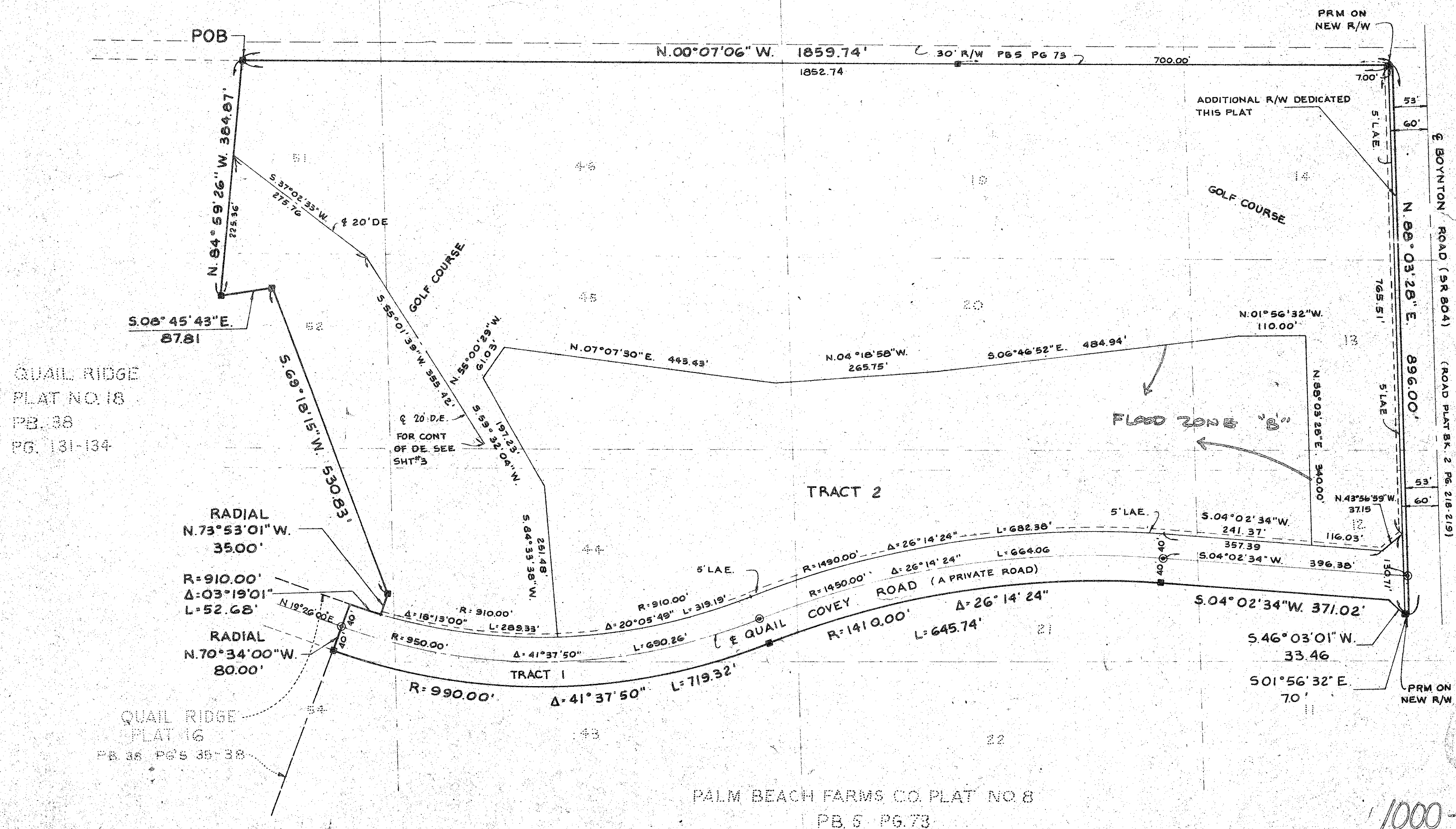
IN SECTION 30 TOWNSHIP 45 SOUTH, RANGE 43 EAST
PALM BEACH COUNTY, FLORIDA, BEING A REPLAT OF
TRACTS 19, 20, 45 & 46 AND PORTIONS OF TRACTS 12, 13,
14, 21, 43, 44, 51, 52, 53, & 54 PALM BEACH FARMS COMPANY
PLAT NO. 8 SEC. 30 T-45-S, R-43-E PLAT BOOK 5 PAGE
73 AND OTHER LANDS

IN 4 SHEETS SHEET NO. 2

181



PALM BEACH FARMS CO. PLAT NO. 8
PB. 5 PG. 73



QUAIL RIDGE
PLAT NO. 18
PB. 38
PG. 131-134

QUAIL RIDGE
PLAT 16
PB. 38 PG. 35-38

PALM BEACH FARMS CO. PLAT NO. 8
PB. 5 PG. 73

NOTES:
THERE SHALL BE NO BUILDINGS OR STRUCTURES PLACED ON UTILITY EASEMENTS.
THERE SHALL NOT BE ANY TYPE OF CONSTRUCTION OR THE PLANTING OF TREES OR SHRUBS ON DRAINAGE EASEMENTS.
BEARING REFERENCE: PLAT NO. 16, QUAIL RIDGE, RECORDED IN PLAT BOOK 36, PAGES 35 AND 36 PUBLIC RECORDS OF PALM BEACH COUNTY, FLORIDA.
RESTRICTIONS, RESERVATIONS AND RESTRICTIVE COVENANTS FOR THIS PLAT ARE PROVIDED IN THE APPLICABLE QUAIL RIDGE CONDOMINIUM ASSOCIATION DOCUMENTS.
PLATTED ROADS PER PLAT BOOK 5, PAGE 73, WITHIN SUBJECT PROPERTY VACATED BY RESOLUTION NO. R-74-813, RECORDED IN OFFICIAL RECORD BOOK 2359, PAGES 1342-1343.

AREA TRACT 1	= 3.217 ACRES
AREA TRACT 2	= 4.715 ACRES
ADDITIONAL AREA	
BOYNTON ROAD	= 0.144 ACRES
AREA GOLF COURSE	= 24.691 ACRES
TOTAL AREA	= 37.767 ACRES
TOTAL DWELLING UNITS	= 66
DENSITY	= 1.75 H.U. PER GROSS ACRE

- NOTES:
- ⊙ = PERMANENT REFERENCE MONUMENT (P.R.M.)
 - = PERMANENT CONTROL POINT (P.C.P.)
 - D.E. = DRAINAGE EASEMENT
 - U.E. = UTILITY EASEMENT
 - L.A.E. = LIMITED ACCESS EASEMENT

APPROVALS

BOARD OF COUNTY COMMISSIONERS
OF PALM BEACH COUNTY, FLORIDA

THIS PLAT IS HEREBY APPROVED FOR RECORD THIS 11
DAY OF December, 1977

BY: *Denms Koehler*
CHAIRMAN

ATTEST:
JOHN B. DUNKLE, CLERK

BY: *Danny B. ...*
DEPUTY CLERK

COUNTY ENGINEER:

THIS PLAT IS HEREBY APPROVED FOR RECORD THIS 11
DAY OF December, 1977

H. F. KAHLERT, COUNTY ENGINEER

1000-057
30/45/43

